



MITSUBISHI MGS-R SERIES

DIESEL GENERATOR SET MGS0800R

MGS0800R / 50Hz

POWER RATING (0.8 P.F.) / Alternator Model

STANDBY : 780 kVA / H6G
(ESP) : Emergency Standby Power

PRIME (PRP) : 700 kVA / H6G
: Prime Power

Voltage Variation

■ **Standard Voltage** 3Phase 4 Wires
380V

■ **Voltages Available** 3Phase 4 Wires
400V, 415V and 440V



*For illustration purpose

Note: Outputs for optional voltages may differ from standard output mentioned above.

CONDITIONS & DEFINITIONS

SYM	NAME OF RATING	DEFINITION	LOAD/OPERATING HOUR*		
			AVE. LOAD FACTOR /24hr	AVE. LOAD /yr	OPERATING Hr/yr
STANDBY (ESP)	Emergency Standby Power	Rated power of an emergency generator as Stand-by that supplies power in case of a failure of main power source or commercial power.	Maximum 80%. (100% in emergency)	Maximum 70%	Maximum 500Hr
PRIME (PRP)	Prime Power	For generators with variable load and unlimited operating hour.	Maximum 80%. Overload operation ($\leq 110\%$) is limited to a max. of 1 hour per 12 hours. Over 90% load operation is limited to a max. of 3 hours per 12 hours	Maximum 70%	Unlimited

Engine ratings are based on SAE J1349 standard conditions and also apply at ISO3046/1, DIN6271 & BS5514 standard conditions.

Conditions are consistent with the requirements under ISO 8528-1:2018

Fuel rates: based on ASTM D975, BS2869 and on fuel oil of 35° API (16°C or 60° F) gravity having a LHV of 42,780 kJ/kg (18,390 Btu/lb.) when used at 29°C (85° F) and weighing 838.9 g/liter (7.001lbs./U.S. gal.).

DIMENSION (Reference Data)

Overall dimensions	L : Length	mm	3725
	W : Width	mm	1800
	H : Height	mm	1940
Total Weight (Dry)		kg	5900
Total Weight (Wet)		kg	6180

*Dimension may be smaller





MITSUBISHI MGS-R SERIES

DIESEL GENERATOR SET MGS0800R

MGS-R SERIES DIESEL ENGINE: MITSUBISHI S6R2-PTAR

L-6, 4 stroke-cycle water-cooled, turbocharged and after-cooled

ENGINE SPECIFICATIONS & TECHNICAL DATA

Bore	mm	170
Stroke	mm	220
Displacement	L	29.96
Piston speed	m/sec.	11.0
Compression ratio		14.0
Lubricating oil capacity	L	100
Coolant capacity without radiator / with radiator	L	55/155
Coolant pump external resistance	PSI	5.0
Coolant pump flow rate	L/min	670
Cooling fan airflow rate	m3/min	720
Cooling fan air flow restriction	kPa	0.1
Ambient air temperature	°C	40
Allowable exhaust back pressure	kPa	6.0
Exhaust flange size		JIS 200A

ENGINE OPERATING DATA

		STANDBY(ESP) 780 KVA	PRIME(PRP) 700 kVA
Gross Engine Power*	kWm	668	605
Brake mean effective pressure	MPa	1.8	1.7
Regenerative absorption	kW	64	64
Noise Level at 1 m (excluding: intake, exhaust & fan)	dB(A)	108	106
Fuel consumption load 100%*	L/hr.	166	149
Fuel consumption load 75%*	L/hr.	125	113
Combustion air inlet flow rate	m3/min	62	56
Exhaust gas flow rate	m3/min	164	148
Exhaust gas temperature	°C	510	500
Heat rejection to coolant	kW	451	408
Heat rejection to exhaust	kW	612	549
Heat rejection to atmosphere from engine	kW	54	49
Heat rejection to atmosphere from generator	kW	41	36

*WITH FAN basis



MITSUBISHI MGS-R SERIES

DIESEL GENERATOR SET MGS0800R

ENGINE STANDARD EQUIPMENT

After-cooler
Structure steel base
Crankcase breather
Charging alternator
Lubricating oil cooler
Manual shutoff
Fuel transfer pump, gear driven, plunger type
Digital Electric Type Governor (Woodward ProAct)
Jacket water pump, gear driven
Lubricating oil filter, full flow paper element
Lubricating oil pump, gear driven
Exhaust dry manifold
Radiator, blower fan, fan drive
24V DC electric starting motor



MGS-R SERIES 7310 MK II GENERATOR CONTROL PANEL

Features

MGS standard 7310 MK II programmable microprocessor generator control panel provides the following functions

- ◆ Start and stop control
- ◆ Engine and generator measurement items on LCD display and LED on the front panel for operation status indication
- ◆ Engine and generator shutdown and warning protection
- ◆ Generator breaker control
- ◆ Expansion module for additional output and input
- ◆ RS485 and RS232C communication for remote monitoring

Shutdown and Warning items on LCD display

- Engine and generator measurement items on LCD display and LED on the front panel for operation status indication
- Engine and generator shutdown and warning protection

Mounting

Fabricated cubicle mounted on individual bracket with anti-vibration isolator

Instrument and control accessories

- Generator running indicator
- Manual button
- Auto button
- CB open button (Manual only)
- CB close button (Manual only)
- Manual start button
- Manual Stop/Reset button
- Selector switch (ACTIVE, PANEL LOCK, STOP/RESET)
- Mute alarm button
- Menu navigation button
- Common alarm indicator
- Voltage adjuster
- Speed adjuster
- Emergency stop pushbutton



MITSUBISHI MGS-R SERIES

DIESEL GENERATOR SET MGS0800R

Measured Items on LCD Display

- Generator volts L1-N, L2-N, L3-N
- Generator volts L1-L2, L2-L3, L3-L1
- Generator amps L1, L2, L3
- Generator Frequency Hz
- Engine speed RPM
- Engine oil pressure (PSI & Bar & kPa)
- Engine cooling water temperature (° C & ° F)
- Battery volts
- Engine hours run
- Generator Load kW, kVA, kVar
- Generator Load kWh, kVAh, kVarh
- Power Factor
- Generator Phase Sequence

Shutdown and Warning items on LCD

- Over-speed : shutdown and warning
- Under-speed : shutdown and warning
- Emergency stop pushbutton
- Loss of speed signal : shutdown
- Fail to stop : warning
- Over voltage (DC) : warning
- Under voltage (DC) : warning
- Lubrication oil filter clogged : warning
- High oil temperature : shutdown and warning *1
- Oil pressure sender open circuit : shutdown
- Charge fail : warning
- Exhaust gas temperature high : warning *1
- Coolant level low : warning *1
- High crankcase internal pressure : shutdown *1
- Generator high current : shutdown (IDMT) and warning
- Over voltage (AC) : shutdown and warning
- Under voltage (AC) : shutdown and warning
- Over frequency : warning
- Under frequency : warning
- Overload : warning
- Winding temperature high (U, V, W) : warning *1
- Bearing temperature high : warning *1
- Electrical trip
- Emergency stop : shutdown
- High coolant temperature : shutdown and warning
- Low oil pressure : shutdown and warning
- Fail to start : shutdown

*1: As Option

Operation status indicated by LED

- Remote start present
- Generator ready
- Lubrication oil filter clogged
- Electrical trip

Gen Set Option Features

- GENERATOR
 - Power Factor Regulator
 - Generator Space Heater
 - Winding / Bearing RTD
- ENGINE
 - Battery Kit
 - Battery Charger
 - Air Cleaner, paper element dry type
 - Anchor Bolts
 - Jacket Water Heater
- CONTROL PANEL
 - Auxiliary Control Panel
 - Cross Current Compensate Transformer (CCT)
 - 2157 expansion unit (Output signal module)
 - 2130 expansion unit (Input signal module)
 - 2133 expansion unit (RTD/Thermocouple module)
- LUBRICATION
 - Lub. Oil Level Regulator
 - Lube oil Priming Pump
- FUEL
 - Fuel Day Service Tank
- COOLING
 - Heat Exchanger
 - Expansion Tank
- EXHAUST
 - Exhaust Silencer
 - Exhaust Flexible Pipe
- SWITCHGEAR
 - Reverse Power Relay



MITSUBISHI MGS-R SERIES

DIESEL GENERATOR SET MGS0800R

MGS-R SERIES AC GENERATOR MODEL: MG-H6G

Features

MGS original design, single bearing, 4 pole, screen protected, self-regulating and brushless with fully connected damper windings, salient pole rotors, A.C. Exciter and rotating rectifier unit. Direct coupled to engine and regreaseable bearing, direct drive centrifugal blower.

Compliance to 100% step load.

Enclosure: Drip-proof IP23

Winding System

Standard 12 wire winding provides 3 phase voltage. All windings are impregnated in vacuum pressure impregnated with a special polyester resin.

Over speed capability: 125% for 2 minutes

Insulation: Class 'H'

Temperature rise: Class H Peak (Standby), Class H (Prime(PRP))

Voltage Regulator

Fully sealed, three phase RMS sensing AVR with built-in protection against sustained over-excitation.

Voltage regulation: Less than +/- 0.5% from no load to full load at any power factor between 0.8 lagging and 1.0. Allowing for a 4% engine speed variation.

Voltage adjustment: +/- 6%

Wave form: No load <1.5% Non-distorting balanced linear load <5.0%

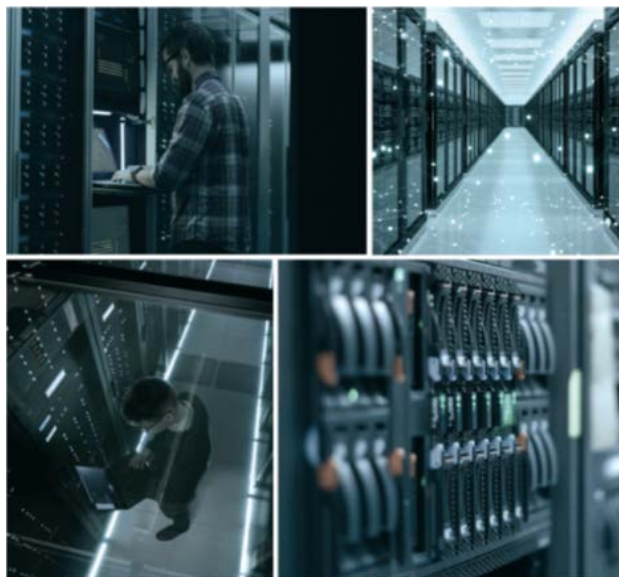
Permanent Magnet Generator (PMG)

Separately excited system which provide isolated power supply for the AVR – sustain short circuit current approximately 250-300% under fault condition.

Electrical Design

In accordance with ISO 8528-3, IEC60034-1/BS EN60034-1, BS5000 Part 3, VDE0530, NEMA MG1-32, CSA22-2-100, AS1359 and UL1446.

Telephone Harmonic factor (THF): Less than 2%



**MITSUBISHI HEAVY INDUSTRIES
ENGINE SYSTEM ASIA**

No. 3, Tuas Avenue 12, Singapore 639024 Republic of Singapore

Phone: 65-6862 2202 Fax: 65-6862 5728

URL: <http://www.mhiesa.com/>

Mitsubishi Heavy Industries Engine System Asia Pte Ltd, serves for the customers with improved products continually. Therefore specification and some materials will be changed without notice. The International System of units (SI) is used in this publication.

MOVE THE WORLD FORWARD  **MITSUBISHI
HEAVY
INDUSTRIES
GROUP**